



# Product Specification Sheet

## Pacific CDM



---

### Metal Halide Ellipsoidal Range

---

The unique optical system of the Pacific Cool Light, the world's first base down axial profile, ensures a powerful, energy efficient, quality beam of light. By utilising an optical system optimised for the theatre with a light source (150W or 70W CDM or similar single ended arc lamp) suited to the specific demands of lighting for architectural, retail display, museum and gallery projects, the Pacific offers display lighting designers a powerful tool.

The Pacific provides variable beam angles, beam shaping, low glare, projection, colour and movement. Its powerful output suits the Pacific CDM to long throw positions in atria, lobbies etc. The four shaping shutters accurately shape the beam while the rotatable lens tube ensures that the exact shutter cut you require is achievable.

Two pattern projection slots allow for precise projection of standard and custom designed patterns. The rotatable gobo holder allows for quick and easy image alignment. Photo like images can be created without concern due to the low gate temperature. The cool gate temperature is a result of the unique optical design of the Pacific combined with CDM/ MHI lamp sources.

The output of the luminaire can be dimmed using the Pacific Dowser accessory – [www.seleconlight.com](http://www.seleconlight.com)

The addition of moving effect attachments ensures a wide range of creative options is available to the designer. Rain, clouds and fire are just some of the options available.

As you would expect on a Selecon luminaire the many operational features are easy and safe to use. Peak/flat lamp adjustment is cool to operate while precise adjustments are easy with the central planetary gear system.

The Pacific CDM series offers a choice of five Zoom systems - 5.5°-13°, 12°-28°, 14°-35°, 23°-50° and 45°-75° and six fixed angle beams – 5HE, 20°, 30°, 40°, 50° and 90° using an electronic ballast (120V; 277V, 220-240V), available in 70W and 150W versions and able to be mounted to the luminaire yoke remotely. The Pacific CDM can be ordered as a complete luminaire or the lamp module and ballast can be ordered separately and fitted to existing Pacific fittings.

---

### Electronic Power Supply

---

Electronic Power Supply, able to be mounted to the luminaire yoke or remote.  
Complies with EN60922 A1:1992 and is TUV certified.

For remote ballast operation the power supply must be within 5m of the lamp. Maximum ambient temperature of 50 / -25°C.

---

### Power Current for Electronic Power Supply

---

150W 220-240V units - 0.70amp  
70W 220-240V units - 0.36amp

The current in the first minutes is lower than the nominal current due to less lamp power at the start up. The start-up current is therefore below the operating current and as such is not a design factor that has to be considered.



---

## Lamps

---

Recommended Lamp:	Philips CDM-T150W or CDM-T70W	
Average Lamp Life:	10,000 hours for 150W lamp	
Lumens:	14000	
Colour Temperature:	3000K	4200k
Colour Rendering Index (RA8):	85	92
Burning position:	Universal	
Power consumption:	147w	
Voltage and Current:	Start-up	Running
Voltage	<5Kv	96v
Current	2.5A	1.8A
Lamp Efficacy:	95 lm/W	
Hot Re-strike:	No	
Re-Ignition Time:	15 minutes	

---

## Order codes

---

### Pacific CDM Lamp Modules

19PACLMCDM	Pacific lamp module for 150W/70W CDM type lamp, no power supply.
19PACLMMHES152	Pacific lamp module for 150W CDM type lamp with electronic power supply.
19PACLMMHES702	Pacific lamp module for 70W CDM type lamp with electronic power supply.

Note – these are the lamp modules ONLY, please specify the Pacific luminaire you require at the time of ordering.

---

### Pacific CDM accessories

---

19PACGHA	Pacific Gobo Holder, A size, fits Pacific 23-50, Fixed Beam, 45-75, 90
19PACGHB	Pacific Gobo Holder, B size, fits Pacific 14-35
19PACGHM	Pacific Gobo Holder, M size, fits Pacific 5.5-13, 12-28
20IRIS	Pacific Iris fits all models
19PACSM1228	Lens Safety Mesh fits Pacific 12-28, 14-35, 45-75, 90
19PACSMFB	Lens Safety Mesh fits Pacific 23-50, Fixed Beam
20SM20	Lens Safety Mesh fits Pacific 5.5-13
19PACCF	Pacific Spare Colour Frame fits Pacific 23-50, Fixed Beam
20CFSF12	Pacific Spare Colour Frame fits Pacific 12-28, 14-35, 45-75, 90
20CFSF2020	Pacific Spare Colour Frame fits Pacific 5.5-13
20HC	Suspension Hookclamp
20SC	Safety Bond
18PACDOWSER	Pacific Dowser – DMX controlled dimmer accessory



## Photometric data

Model	Zoomspot 5.5 – 13		Zoomspot 12-28	
Beam Angle	cd @ 5.5°	cd @ 13°	cd @ 12°	cd @ 28°
Peak	822400	472960	237600	63720
Flat	822400	348800	129600	54000

Model:	Zoomspot 14-35		Zoomspot 26-50		Zoomspot 45-75	
Beam Angle	cd @ 14°	cd @ 35°	cd @ 26°	cd @ 50°	cd @ 45°	cd @ 75°
Peak	237600	63720	101520	36000	23520	10480
Flat	129600	54000	76680	20520	18400	7760

Beam Angle	Fixed 20°	Fixed 30°	Fixed 40°	Fixed 50°	Fixed 90°
Peak	126000	82800	47160	27720	12376
Flat	100800	50400	28080	21600	12376

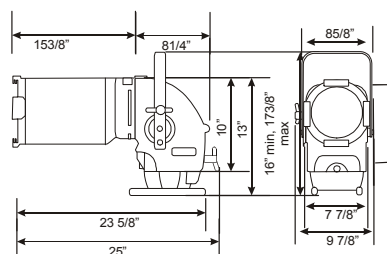
Peak cd readings: Where peak lux level (centre beam) is a ratio of 3 to 1, or greater, from centre to outer edge of the beam.

Flat cd readings: Where peak lux level (centre beam) is a ratio of 2 to 1, or greater, from centre to outer edge of the beam.

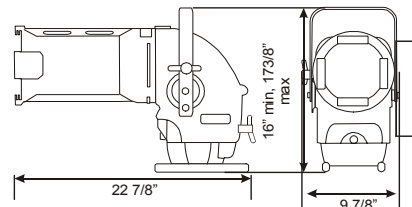
For full information on Light Output and Beam Diameter please refer to our website: [www.seleconlight.com](http://www.seleconlight.com)

## Physical data

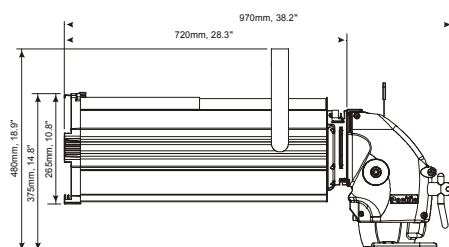
12°-28° / 14°-35° Zoomspot  
Weight: 9.5kg



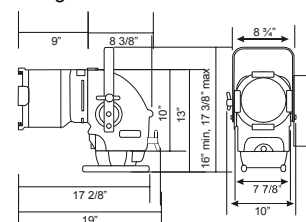
26°-50° Zoomspot & Fixed beam  
Weight: 8.5kg



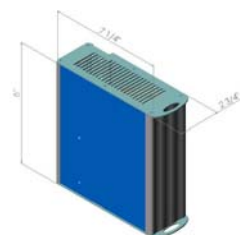
5.5 – 13 Zoomspot  
Weight: 15.8kg



90 Fixed Beam  
Weight: 8.5kg



**Ballast Box**  
(ignitor is integral to the electronic power supply)  
Ballast Weight: 3.2kg





## Thermal data

### Heatsink temperatures

	Position 1	Position 2	Position 3
Top	61°C	48°C	46°C
Bottom	65°C	65°C	60°C

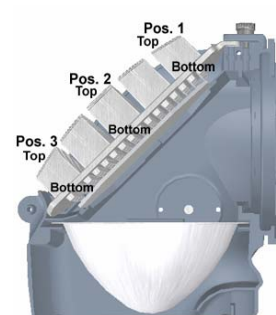
### Gate Temperatures

Pacific 26°- 50°, Fixed beam 20°, 30°, 40°, 50°

Gate Centre		Gate Edge	
Peak	Flat	Peak	Flat
120°C	68°C	70°C	70°C

### Pacific 12°- 28°

Gate Centre		Gate Edge	
Peak	Flat	Peak	Flat
129°C	91°C	69°C	69°C



All measurements were performed  
all shutters open, without gobo and  
Please Note: Temperatures will va

Selecon reserves the right to change the specifications without notice (07/08)